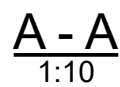
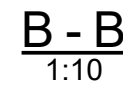
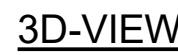


PAINT : COLORBOND MONUMENT



GENERAL NOTES

- | | |
|--------|--|
| CLIENT | |
|--------|--|



FRAME

A	ISSUED FOR APPROVAL	SDPL		03.07.2017
REV MARK	REVISION DESCRIPTION	CREATED	APPROVED	REV. DATE

PHASE	QTY.
1	1

The drawing consists of two main parts: a top level plan view and a bottom level section view.

Top Level Plan View:

- Dimensions:** Total width is 5517. Horizontal segments from left to right are 3218, 262, 3533, 70, 212, 1665, and 5517.
- Structural Elements:**
 - Columns: C18 (left), f14 (center), f13 (right).
 - Beams: 2-18ø 8.8S (multiple locations).
 - Roof/Deck: RD (left), f18 (left), f16 (right), f79 (top right), f80 (top right).
 - Other labels: f93, f77, f88.
- Annotations:** Various dimensions (e.g., 45, 64, 3218, 53, 3271, 3533, 70, 212, 3815, 3852, 60, 60, 9, 10, 40, 90, 10) and section markers A and B.


Bottom Level Section View:

- Dimensions:** Total width is 4708. Horizontal segments from left to right are 282, 282, 343, 60, 5050, 62, 5112, 404, and 5517.
- Structural Elements:**
 - Columns: f18 (left), f14 (N/S), f77 (N/S), f13 (N/S), f16 (right), f79 (F/S), f80 (F/S), f88 (right).
 - Beams: 2-18ø 8.8S (multiple locations).
 - Roof/Deck: RD (left), f93 (left), f164 (center), f79 (F/S), f80 (F/S).
 - Other labels: m187 CTRD, f13, f14, f77, f13, f16, f79, f80, f88.
- Annotations:** Various dimensions (e.g., 12, 3518, 5517, 1999, 3518, 10, 90, 5, 15, 39, 66, 32, 5050, 62, 5112, 404, 5517, 12, 35, 195, 35, 12) and section markers A and B.

[illegible]

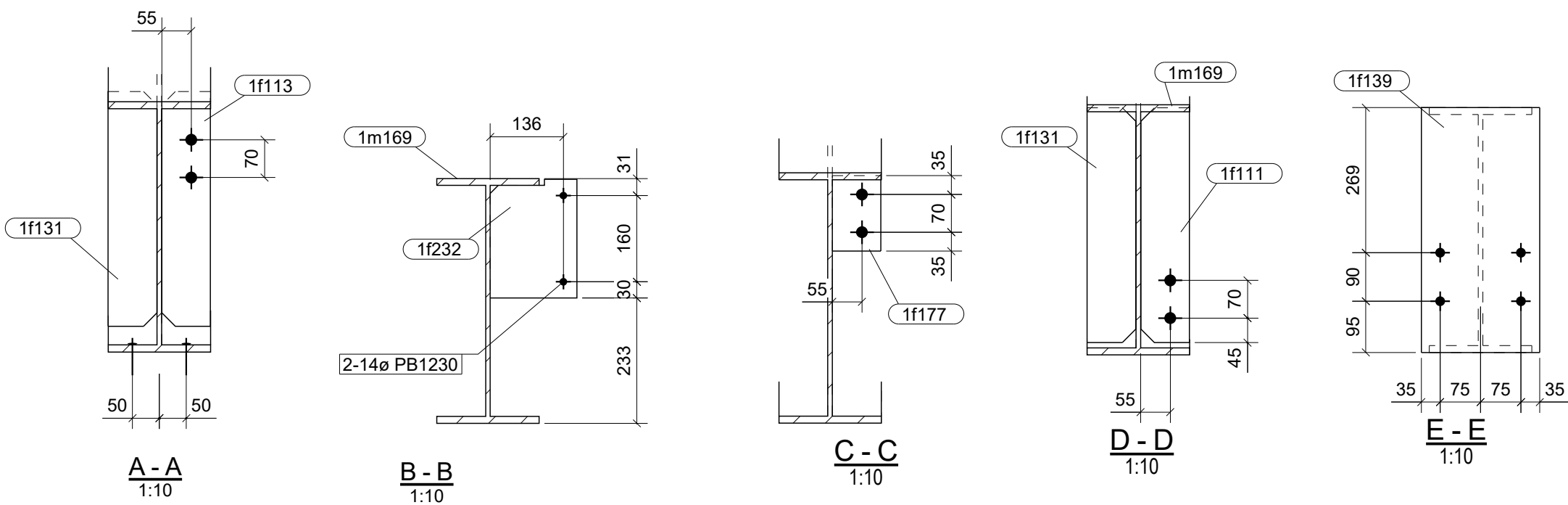
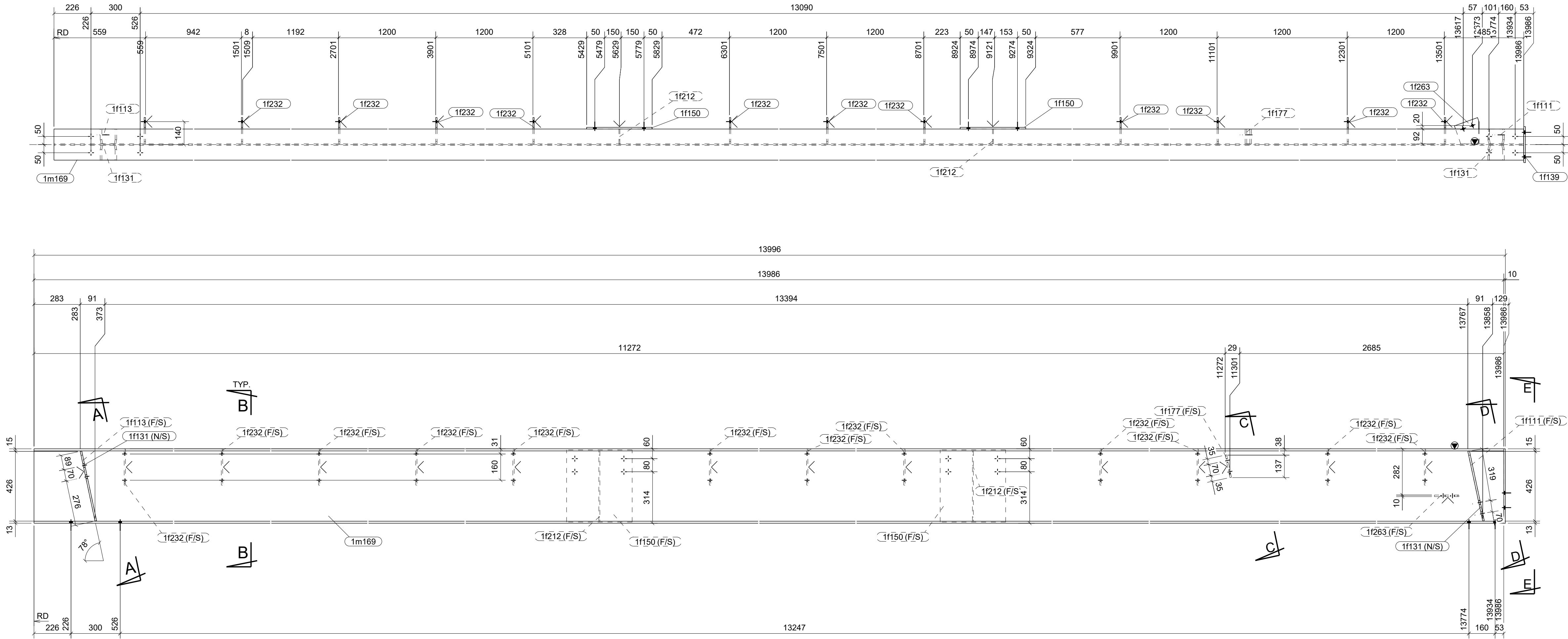
A - A

PAINT : ROZP

						GENERAL NOTES ALL WELDING PREPARATION SHALL BE TO AS 1554 PART 1 & 5 UNO. ALL FILLET WELDS SHALL BE 6mm CONTINUOUS UNO. ALL BUTT WELD SHALL BE FULL PENETRATION UNO, GRADE SP UNO. REMOVE ALL BURRS AND SHARP EDGES. ALL HOLES ARE Ø22 & BOLTS ARE M20 & 8/16 UNO. CLEATS ON C/L OF MEMBER UNO. ALL NOTCHES TO HAVE 11mm RADIUS AT INTERNAL CORNER NO PAINT IN WAY OF T/BOLT CONNECTIONS ASSEMBLY MARK TO BE STAMPED ON TOP FACE AT LOCATION INDICATED BY DO NOT SCALE OFF DRAWING ASK IN DOUBT. * INDICATES CONNECTING SIDE OF PLATE SURFACE FINISH AS PER CLIENT SPECIFICATION		 www.jpdrftng.co.au		<table><tr><td></td><td>NAME</td><td>DATE</td></tr><tr><td>DRAWN BY</td><td>DSK</td><td>07.10.2017</td></tr><tr><td>CHECKED BY</td><td>J. PATEL</td><td>07.10.2017</td></tr><tr><td>APPROVED BY</td><td colspan="2"></td></tr><tr><td>SCALE</td><td colspan="2">AS NOTED</td></tr><tr><td>MODELLED BY</td><td colspan="2">J. PATEL/0114</td></tr><tr><td>CLIENT</td><td colspan="2">MACWELD INDUSTR</td></tr></table>			NAME	DATE	DRAWN BY	DSK	07.10.2017	CHECKED BY	J. PATEL	07.10.2017	APPROVED BY			SCALE	AS NOTED		MODELLED BY	J. PATEL/0114		CLIENT	MACWELD INDUSTR		<table><tr><td colspan="4">PROJECT TITLE</td></tr><tr><td colspan="4">TAPAROO RESERVE CLUBROOMS</td></tr><tr><td colspan="4">TAPAROOSA5017</td></tr><tr><td colspan="4">COLUMN</td></tr><tr><td>SHEET SIZE</td><td>PROJECT No:</td><td>DRAWING No:</td><td>REVISION</td></tr><tr><td>A2</td><td>0139</td><td>[C. 18]</td><td>0</td></tr></table>				PROJECT TITLE				TAPAROO RESERVE CLUBROOMS				TAPAROOSA5017				COLUMN				SHEET SIZE	PROJECT No:	DRAWING No:	REVISION	A2	0139	[C. 18]	0
	NAME	DATE																																																										
DRAWN BY	DSK	07.10.2017																																																										
CHECKED BY	J. PATEL	07.10.2017																																																										
APPROVED BY																																																												
SCALE	AS NOTED																																																											
MODELLED BY	J. PATEL/0114																																																											
CLIENT	MACWELD INDUSTR																																																											
PROJECT TITLE																																																												
TAPAROO RESERVE CLUBROOMS																																																												
TAPAROOSA5017																																																												
COLUMN																																																												
SHEET SIZE	PROJECT No:	DRAWING No:	REVISION																																																									
A2	0139	[C. 18]	0																																																									
2	0	ISSUED FOR FABRICATION	DSK	J. PATEL	07.10.2017																																																							
1	A	ISSUED FOR APPROVAL	DSK	J. PATEL	28.07.2017																																																							
No	REV MARK	REVISION DESCRIPTION	DRN. BY	CHK. BY	REV. DATE																																																							

GRID LOCATION	PHASE	QTY.
1B131	G/1-1d	1

MATERIAL LIST						
ITEM	No.OFF	SECTION	LENGTH	GRADE	WEIGHT(kg)	AREA(m ²)
1f111	1	FL10*90	435	250	3.0	0.1
1f113	1	FL10*90	435	250	3.0	0.1
1f131	2	PLT10*91	435	250	6.1	0.2
1f139	1	PLT10*220	454	250	7.8	0.2
1f150	2	PLT10*400	440	250	27.6	0.7
1f177	1	FL10*90	140	250	1.0	0.0
1f212	2	FL6*90	429	250	3.6	0.2
1f232	12	PLT8*161	220	250	25.7	0.9
1f263	1	FL10*150	154	250	1.4	0.0
1m169	1	UB460*67	13986	300	938.5	22.8
TOTAL:					1017.9	25.2



1 BEAM[S] REQUIRED MK 1B131
PROFILE = UB460*67
SCALE:1:10

PAINT : COLORBOND MONUMENT

REV MARK	REVISION DESCRIPTION	CREATED	APPROVED	REV. DATE
A	ISSUES FOR APPROVAL	S.S.B		29.05.2017
1	RE-ISSUED FOR CONSTRUCTION	S.S.B		18.06.2017
0	ISSUED FOR CONSTRUCTION	S.S.B		08.06.2017

GENERAL NOTES
• ALL WELDING PREPARATION SHALL BE TO AS 1554 PART 1 & 5 UNO.
• ALL FILLET WELDS SHALL BE 6mm CONTINUOUS UNO.
• ALL BUTT WELD SHALL BE FULL PENETRATION UNO, GRADE SP UNO.
• REMOVE ALL BURRS AD SHARP EDGES.
• ALL HOLES ARE Ø22 & BOLTS ARE M20 8.8/S UNO.
• CLEATS ON C/L OF MEMBER UNO.
• ALL NOTCHES TO HAVE 11mm RADIUS AT INTERNAL CORNER
• NO PAINT IN WAY OF TF BOLT CONNECTIONS.
• ASSEMBLY MARK TO BE STAMPED ON TOP FACE INDICATED BY
• DO NOT SCALE OFF DRAWING ASK IN DOUBT.
• < INDICATES CONNECTING SIDE OF PLATE
• SURFACE FINISH AS PER CLIENT SPECIFICATION

CLIENT

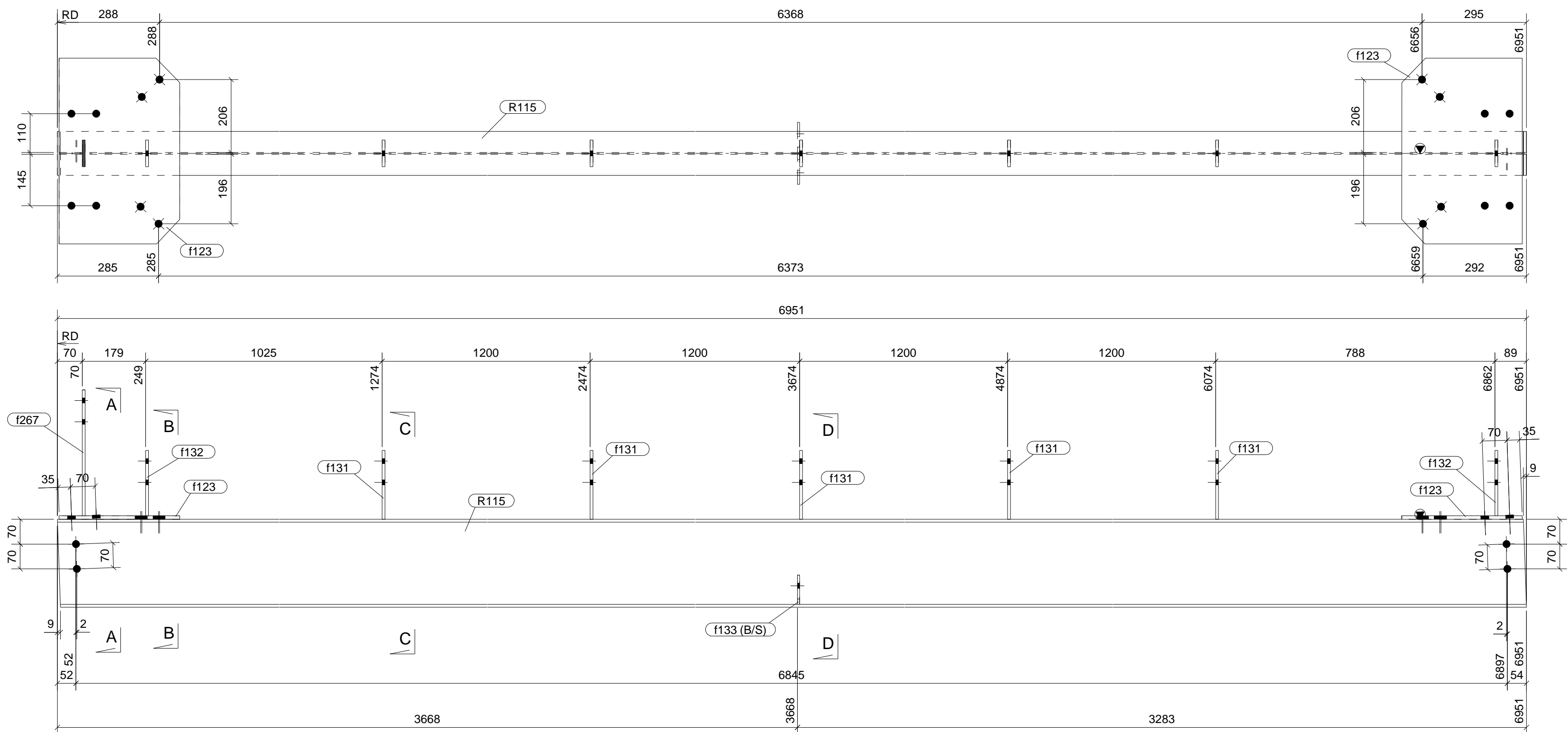
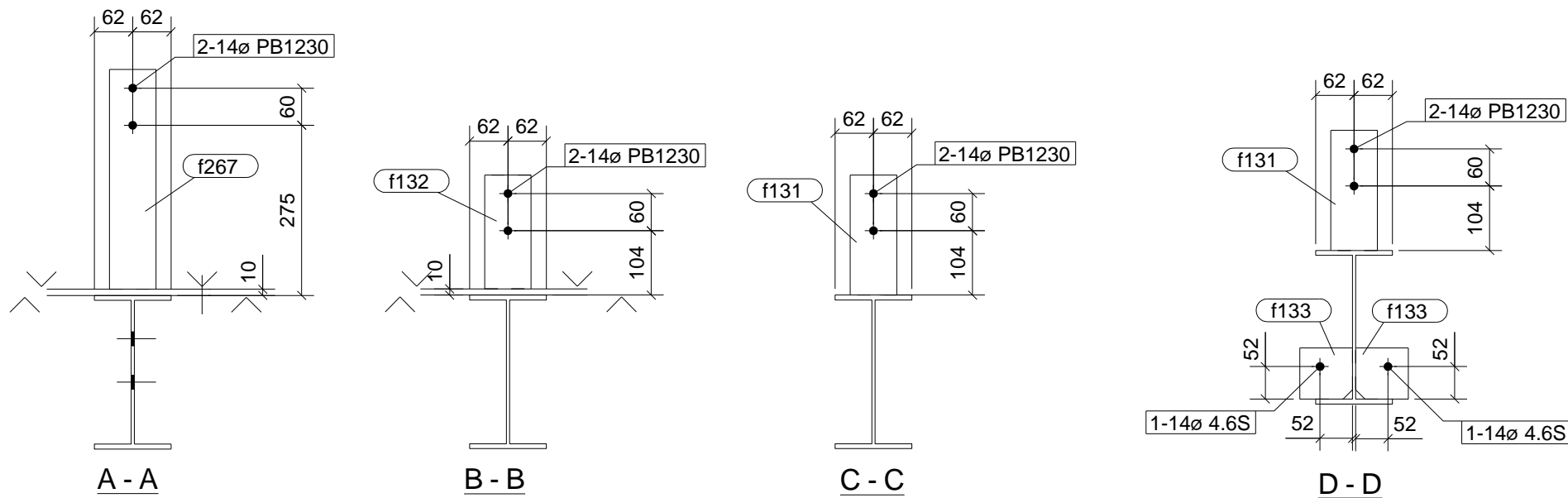


NAME
DATE
DRAWN BY
CHECKED BY
APPROVED BY
SCALE
MODELLER BY
BUILDER

PROJECT TITLE
ST IGNATIUS' COLLEGE
STAGE - 1
BEAM
SHEET SIZE
PROJECT No.
DRAWING No.
REVISION

PHASE	QTY.
3	1

MATERIAL LIST						
ITEM	No.OFF	SECTION	LENGTH	GRADE	WEIGHT(kg)	AREA(m ²)
R115	1	UB250*26	6951	300PLUS	178.4	6.7
f123	2	PLT10*340	524	250	27.2	0.7
f131	5	FL8*75	194	250	4.6	0.2
f132	2	FL8*75	184	250	1.7	0.1
f133	2	PLT6*82	85	250	0.6	0.0
f267	1	FL8*75	355	250	1.7	0.1
TOTAL:					214.3	7.7

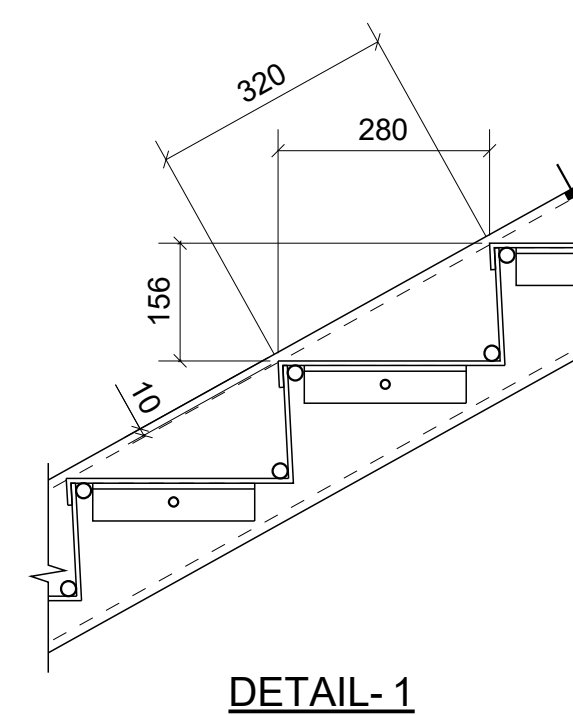
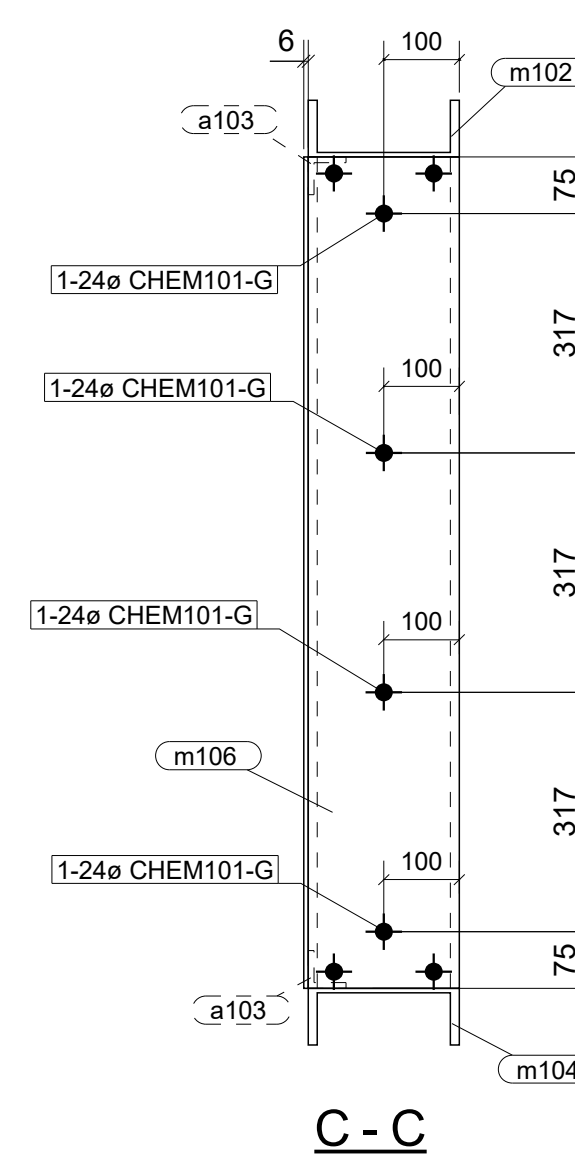


1 RAFTER[S] REQUIRED MK R115
PROFILE = UB250*26
SCALE:1:10

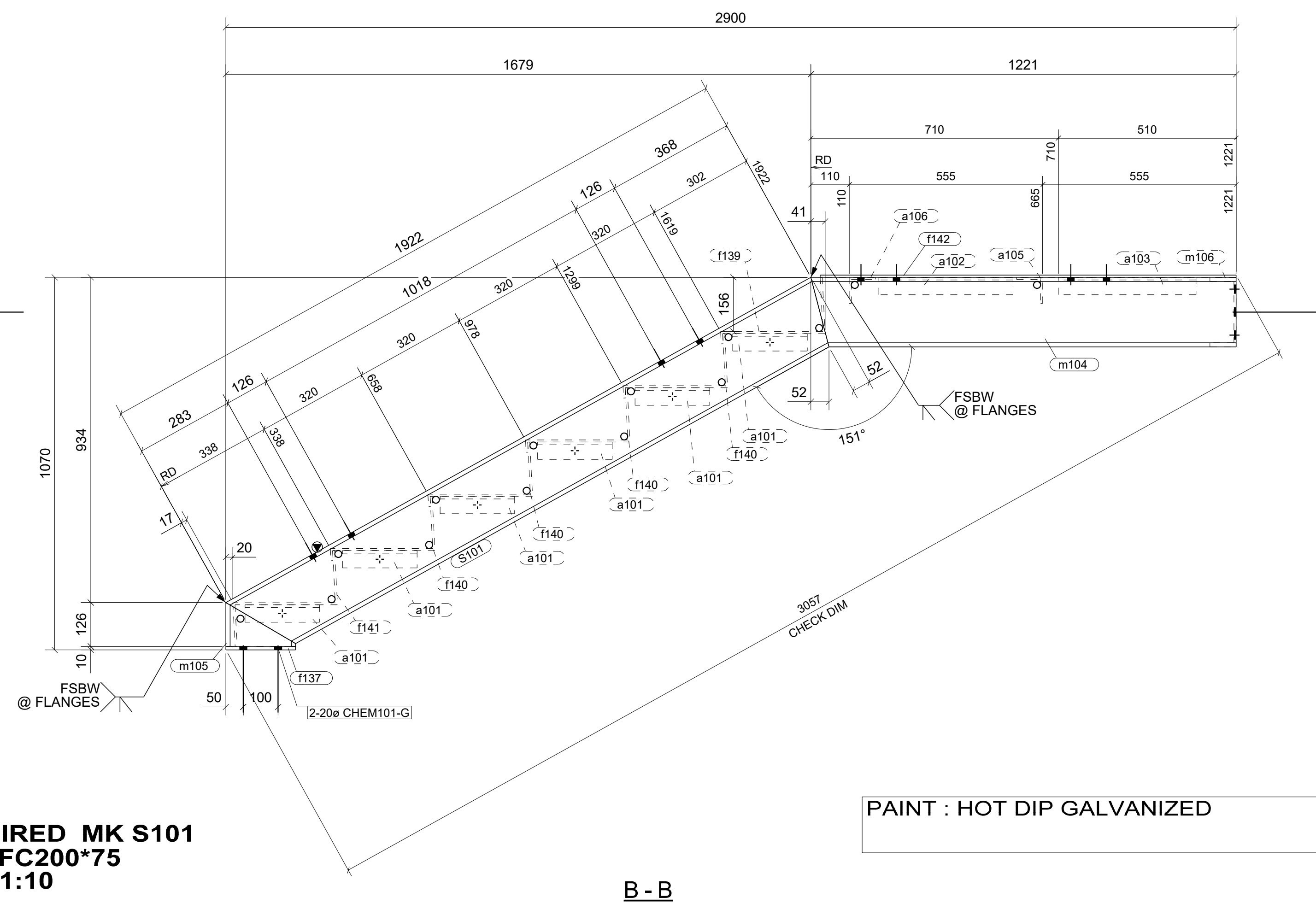
PAINT : DULUX DURAMAX GPE

						<div>GENERAL NOTES</div> <div><div>- ALL WELDING PREPARATION SHALL BE TO AS 1554 PART 1 & 5 UNO.</div><div>- ALL FILLET WELDS SHALL BE 6mm CONTINUOUS UNO.</div><div>- ALL BUTT WELD SHALL BE FULL PENETRATION UNO, GRADE SP UNO.</div><div>- REMOVE ALL BURRS AND SHARP EDGES.</div><div>- ALL HOLES ARE Ø22 & BOLTS ARE M20 8.8/5 UNO.</div><div>- CLEATS ON C/O MEMBER UNO.</div><div>- ALL NOTCHES TO HAVE 11mm RADIUS AT INTERNAL CORNER.</div><div>- NO PAINT IN WAY OF TF BOLT CONNECTIONS.</div><div>- ASSEMBLY MARK TO BE STAMPED ON TOP FACE AT LOCATION INDICATED BY</div><div>- DO NOT SCALE OFF DRAWING ASK IN DOUBT.</div><div>- INDICATES CONNECTING SIDE OF PLATE</div><div>- SURFACE FINISH AS PER CLIENT SPECIFICATION</div></div>	<div><div><div><div></div><div></div><div></div></div><div><div></div><div></div><div></div></div></div><div>DRAFTING SERVICES</div></div>	<div><div><div>NAME</div><div>DATE</div></div><div><div>DRAWN BY</div><div>J. PATEL</div><div>05.06.2017</div></div><div><div>CHECKED BY</div><div>F. RAHMAN</div><div>05.06.2017</div></div><div><div>APPROVED BY</div><div></div><div></div></div><div><div>SCALE</div><div>AS NOTED</div></div><div><div>MODELLED BY</div><div>J PATEL / 0114</div></div><div><div>CLIENT</div><div>PIKE CONSTRUCTI</div></div></div> <div><div>ALL DIMENSIONS IN MILLIMETRES U.N.O.</div><div><div></div><div></div></div></div>	<div>PROJECT TITLE</div> <div>ALDI HAYBOROUGH LOT 1010 SA</div>
3	0	ISSUED FOR FABRICATION	J. PATEL	F. RAHMAN	05.06.2017			<div>RAFTER</div> <div><div>SHEET SIZE</div><div>PROJECT No:</div><div>DRAWING No:</div><div>REVISION</div></div> <div><div>A2</div><div>S-0928</div><div>[R.115]</div><div>0</div></div>	
2	B	ISSUED FOR APPROVAL	J. PATEL	F. RAHMAN	25.05.2017				
1	A	ISSUED FOR APPROVAL	J. PATEL	F. RAHMAN	14.05.2017				
No	REV MARK	REVISION DESCRIPTION	DRN. BY	CHK. BY	REV. DATE				

PHASE	QTY.
3	1



m106	1	PFC200*75	1100	300PLUS	25.2	0.7
TOTAL:					432.8	16.1



PAINT : HOT DIP GALVANIZED

1 STAIR[S] REQUIRED MK S101
PROFILE = PFC200*75
SCALE:1:10

[illegible]

PHASE	QTY.
1	1

Technical drawing of a bridge deck cross-section C-C, showing two views: a top view and a side view.

Top View (Plan View):


- Overall width: 4672
- Overall height: 4424
- Dimensions from left to right: 48, 1060, 1200, 1200, 948, 4457.
- Dimensions from top to bottom: 70, 90, 70, 7, 32, 32, 4424, 3459, 4457, 997, 4457, 215.
- Structural details: RD, A, B, f111, R14, f49 (F/S), f52 (F/S), f82 (B/S), f100, f103 (F/S), f104 (N/S).

Side View (Elevation View):

- Overall width: 4282
- Overall height: 2960
- Dimensions from left to right: 215, 44, 2960, 1193, 4457.
- Dimensions from top to bottom: 215, 44, 259, 41, 48, 49, 39, 46, 262, 216, 2951, 4457.
- Structural details: RD, f49, 2-18ø 8.8S, R14, f50, f52, 2-18ø 8.8S, f82, f103, f104.

The drawing is labeled **C-C** at the bottom.

PAINT : ROZP

								GENERAL NOTES				<table><tr><td colspan="2">NAME</td><td>DATE</td></tr><tr><td>DRAWN BY:</td><td>DSK</td><td>07.10.2017</td></tr><tr><td>CHECKED BY:</td><td>J. PATEL</td><td>07.10.2017</td></tr><tr><td>APPROVED BY:</td><td colspan="2"></td></tr><tr><td>SCALE</td><td colspan="2">AS NOTED</td></tr><tr><td>MODELLED BY:</td><td colspan="2">J. PATEL/0114</td></tr><tr><td>CLIENT</td><td colspan="2">MACWELD INDUSTR</td></tr></table>		NAME		DATE	DRAWN BY:	DSK	07.10.2017	CHECKED BY:	J. PATEL	07.10.2017	APPROVED BY:			SCALE	AS NOTED		MODELLED BY:	J. PATEL/0114		CLIENT	MACWELD INDUSTR		PROJECT TITLE		TAPAROO RESERVE CLUBROOMS					
NAME		DATE																																								
DRAWN BY:	DSK	07.10.2017																																								
CHECKED BY:	J. PATEL	07.10.2017																																								
APPROVED BY:																																										
SCALE	AS NOTED																																									
MODELLED BY:	J. PATEL/0114																																									
CLIENT	MACWELD INDUSTR																																									
												TAPAROOSA5017																														
												RAFTER																														
												SHEET SIZE		PROJECT No:	DRAWING No:	REVISION																										
												A2		0139	[R. 14]	0																										
2	0	ISSUED FOR FABRICATION		DSK	J. PATEL	07.10.2017																																				
1	A	ISSUED FOR APPROVAL		DSK	J. PATEL	28.07.2017																																				
No	REV MARK	REVISION DESCRIPTION		DRN. BY	CHK. BY	REV. DATE																																				

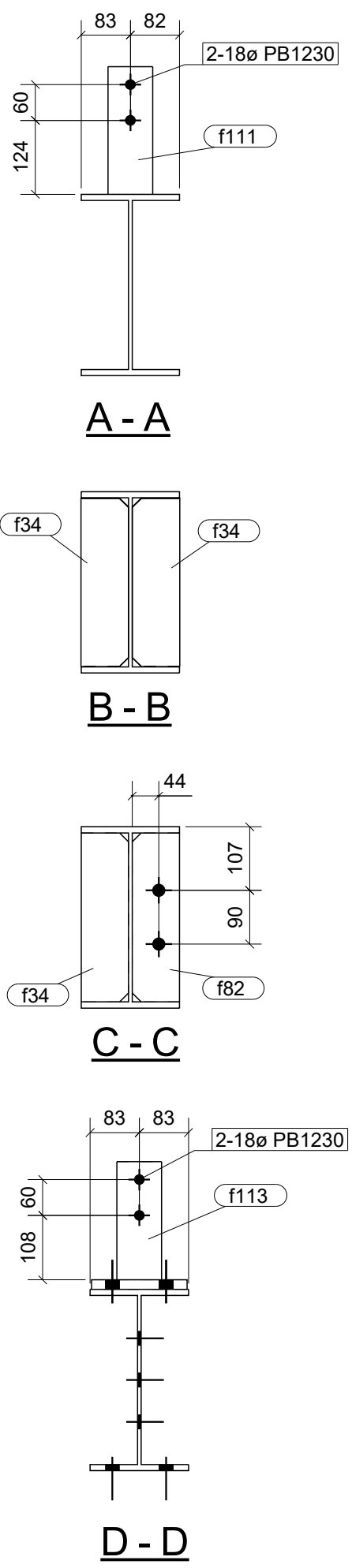
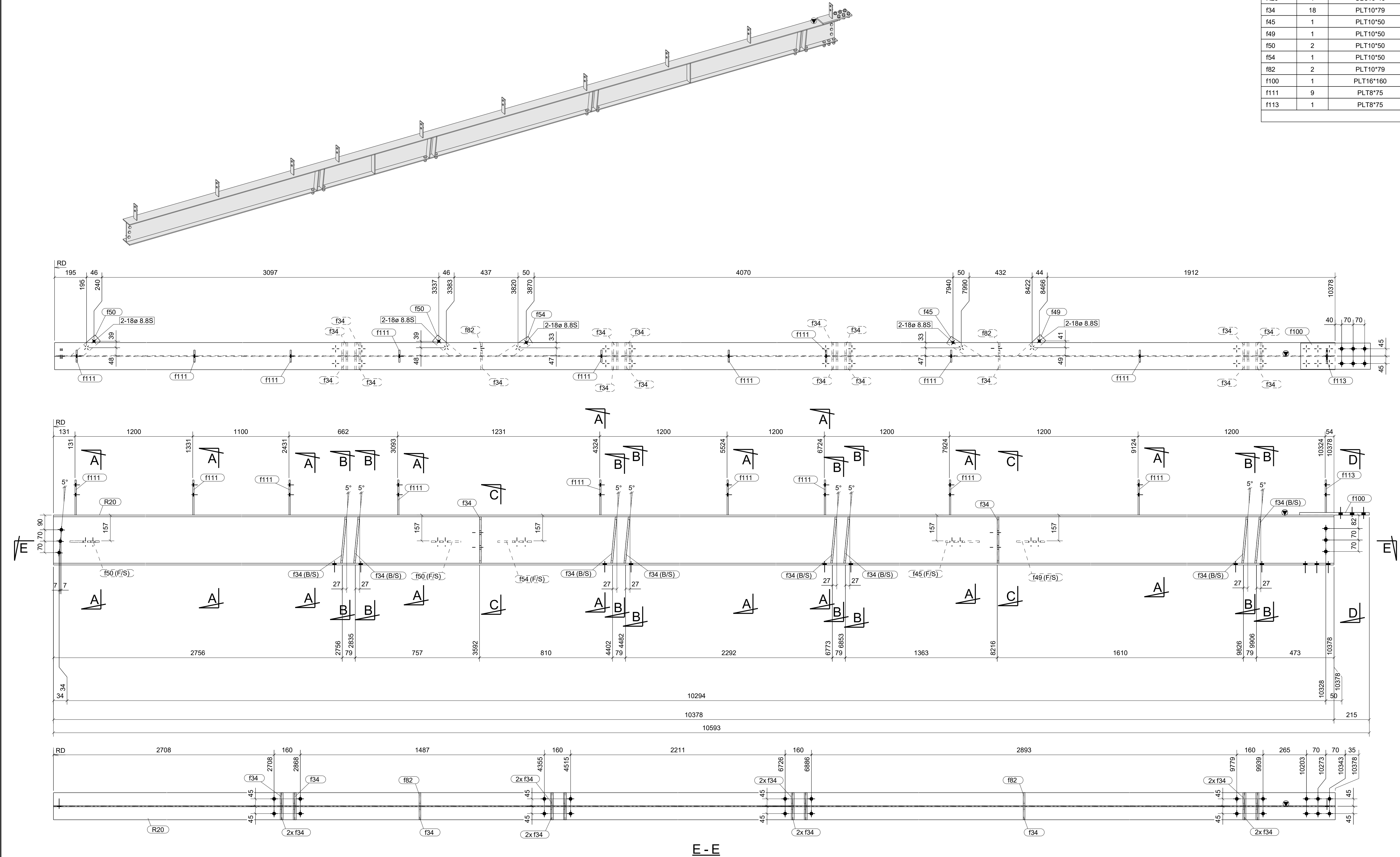
GRID LOCATION
R20 9/E-B

PHASE
1

QTY.
1

MATERIAL LIST

ITEM	No.OFF	SECTION	LENGTH	GRADE	WEIGHT(kg)	AREA(m ²)
R20	1	UB310*40	10378	300	424.5	12.9
f34	18	PLT10*79	283	250	31.5	0.9
f45	1	PLT10*50	214	250	0.7	0.0
f49	1	PLT10*50	189	250	0.6	0.0
f50	2	PLT10*50	194	250	1.3	0.0
f54	1	PLT10*50	214	250	0.7	0.0
f82	2	PLT10*79	284	250	3.5	0.1
f100	1	PLT16*160	425	250	8.5	0.2
f111	9	PLT8*75	214	250	9.1	0.3
f113	1	PLT8*75	198	250	0.9	0.0
TOTAL:					481.3	14.5

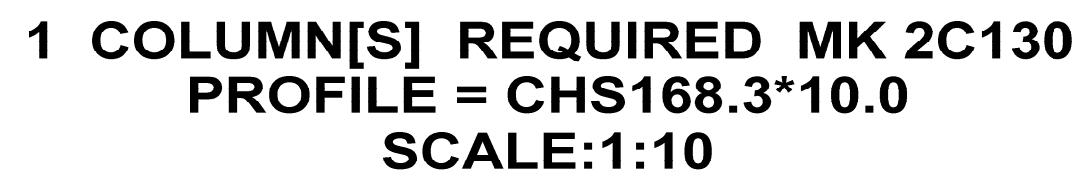


1 RAFTER[S] REQUIRED MK R20
PROFILE = UB310*40
SCALE:1:10

PAINT : ROZP

GENERAL NOTES						PROJECT TITLE	
ALL WELDING PREPARATION SHALL BE TO AS 1554 PART 1 & 5 UNO.						TAPAROO RESERVE CLUBROOMS	
ALL FILLET WELDS SHALL BE 6mm CONTINUOUS UNO.						TAPAROOSA5017	
ALL BUTT WELD SHALL BE FULL PENETRATION UNO, GRADE SP UNO.						RAFTER	
REMOVE ALL BURRS AND SHARP EDGES						SHEET SIZE	
ALL HOLES ARE Ø22 & BOLTS ARE M20 & 8 IS UNO.						PROJECT No:	
CLEATS ON OIL OF MEMBER UNO						DRAWING No:	
NOTCHES TO HAVE 1mm RADIUS AT INTERNAL CORNER						REVISION	
PAINT IN WAY OF TF BOLT CONNECTIONS						A1	
ASSEMBLY MARK TO BE STAMPED ON TOP FACE AT LOCATION INDICATED BY						0139	
NOT SCALE OFF DRAWINGS ASK IN DOUBT.						[R.20]	
INDICATES CONNECTING SIDE OF PLATE						0	
SURFACE FINISH AS PER CLIENT SPECIFICATION							

PAINT : COLORBOND MONUMENT




GENERAL NOTES

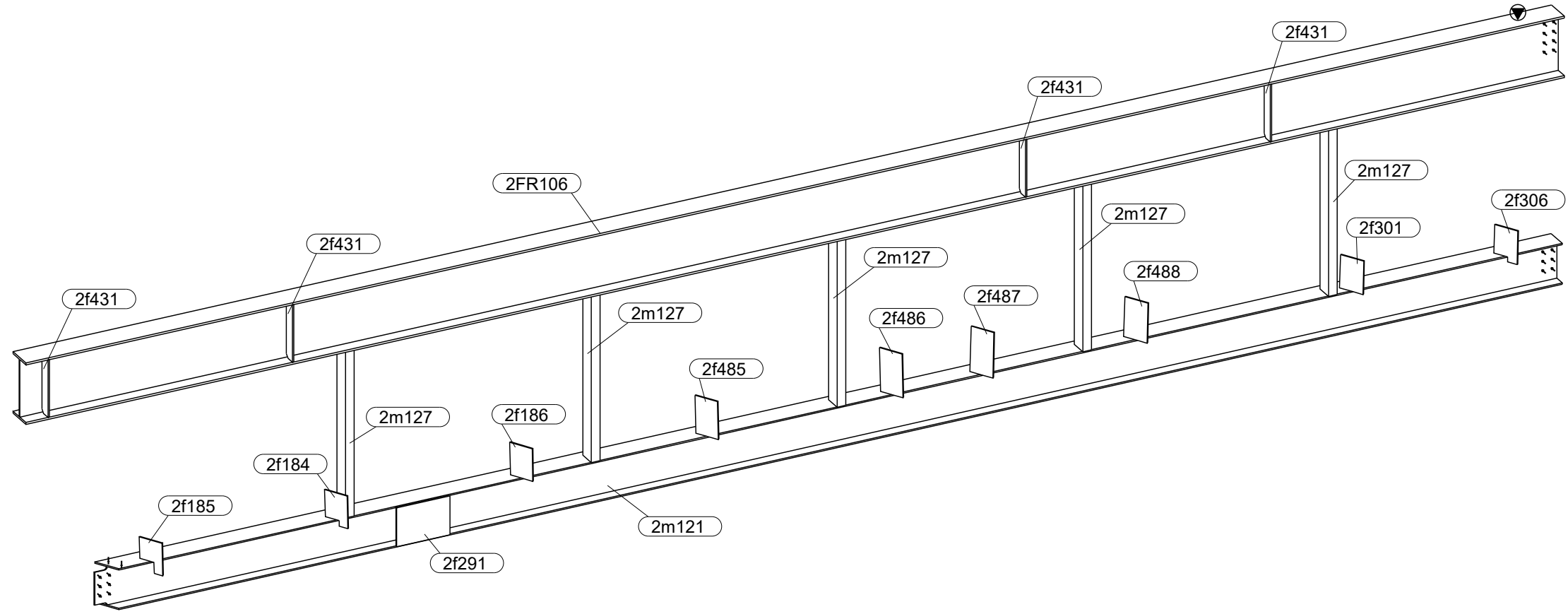
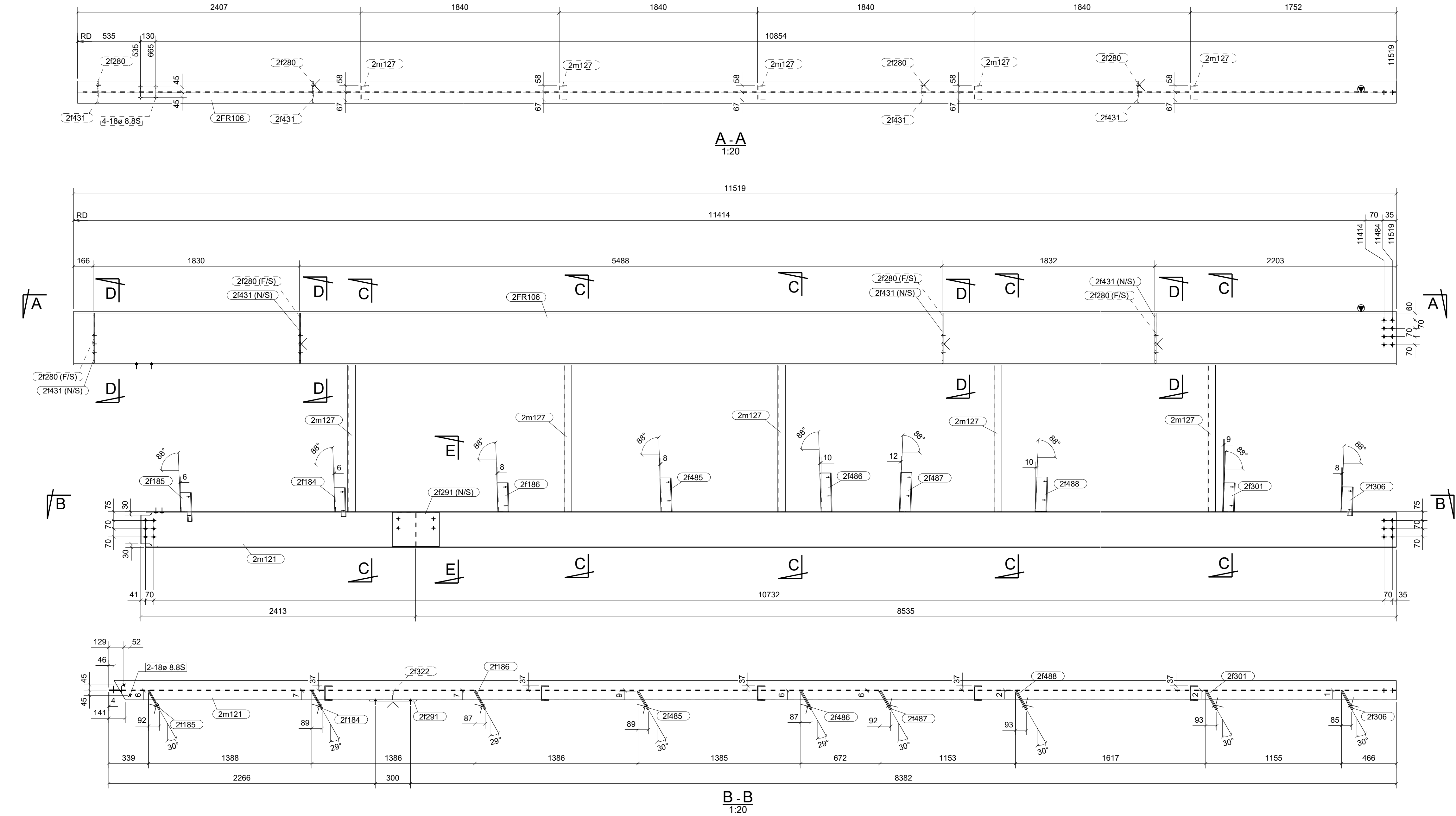
- ALL WELDING PREPARATION SHALL BE TO AS 1554 PART 1 & 5 UNO.
- ALL FILLET WELDS SHALL BE 6mm CONTINUOUS UNO.
- BUTT WELD SHALL BE FULL PENETRATION UNO, GRADE SP UNO.
- REMOVE ALL BURRS AD SHARP EDGES.
- ALL HOLES ARE Ø22 & BOLTS ARE M20 & 8/S UNO.
- CLEATS ON CIL OF MEMBER UNO.
- ALL NOTCHES TO HAVE 11mm Radius AT INTERNAL CORNER
- PAINT IN ACCORDANCE WITH THE CONNECTIONS.
- ASSEMBLY MARK TO BE STAMPED ON TOP FACE INDICATED BY
- DO NOT SCALE OFF DRAWING ASK IN DOUBT.
- < INDICATES CONNECTING SIDE OF PLATE
- SURFACE FINISH AS PER CLIENT SPECIFICATION



JP
DRAFTING
SERVICES
www.jpdrafting.com.au

NAME		DATE		PROJECT TITLE ST IGNATIUS' COLLEGE STAGE - 2 EAST & WEST NODE									
DRAWN BY	SDPL	03.07.2017											
CHECKED BY	J.PATEL	03.07.2017											
APPROVED BY		03.07.2017											
SCALE	AS NOTED			COLUMN									
MODELLED BY	0116 / JPATEL												
BUILDER	QUASAR GROUP												
ALL DIMENSIONS IN MILLIMETRES U.N.O.						SHEET SIZE		PROJECT No:		DRAWING No:		REVISION	
						A1		4150		[2C.130]		A	

GRID LOCATION 2FR106 B3-B2/BC	PHASE 4	QTY. 1	MATERIAL LIST			
ITEM	No.OFF	SECTION	LENGTH	GRADE	WEIGHT(kg)	AREA(m ²)
2FR106	1	UB460*75	11519	300	859.3	18.9
2f184	1	PLT8*181	245	250	2.5	0.1
2f185	1	PLT8*181	245	250	2.2	0.1
2f186	1	PLT8*181	245	250	2.8	0.1
2f280	4	FL10*90	428	250	11.9	0.3
2f291	1	PLT10*290	400	250	9.1	0.2
2f301	1	PLT8*187	245	250	2.9	0.1
2f306	1	PLT8*187	245	250	2.6	0.1
2f322	1	PLT6*79	284	250	1.0	0.0
2f431	4	PLT10*90	428	250	12.0	0.3
2f485	1	PLT8*178	287	250	3.2	0.1
2f486	1	PLT8*181	329	250	3.7	0.1
2f487	1	PLT8*183	334	250	3.8	0.1
2f488	1	PLT8*187	293	250	3.4	0.1
2m121	1	UB310*40	10948	300	442.3	13.6
2m127	5	PFC125*65	1247	300	74.2	3.1
TOTAL:					1436.7	37.5



1 FRAME[S] REQUIRED MK 2FR106
PROFILE = UB460*75
SCALE:1:10

PAINT : COLORBOND MONUMENT

A	ISSUED FOR APPROVAL	SDPL		03.07.2017
REV MARK	REVISION DESCRIPTION	CREATED	APPROVED	REV. DATE

GENERAL NOTES	CLIENT		NAME	DATE	PROJECT TITLE
ALL WELDING PREPARATION SHALL BE TO AS 1554 PART 1 & 5 UNO.			DRAWN BY SDPL	03.07.2017	ST IGNATIUS' COLLEGE
ALL FILLET WELDS SHALL BE 6mm CONTINUOUS UNO.		CHECKED BY J.PATEL	03.07.2017		STAGE - 2 EAST & WEST NODE
ALL BUTT WELD SHALL BE FULL PENETRATION UNO, GRADE SP UNO.		APPROVED BY	03.07.2017		
REMOVE ALL BURRS AD SHARP EDGES.		SCALE	AS NOTED		
ALL HOLES ARE Ø22 & BOLTS ARE M20 8.8/S UNO.		MODELLED BY	0116 / JPATEL		FRAME
CLEATS ON C/L OF MEMBER UNO.		BUILDER	QUASAR GROUP		
ALL NOTCHES TO HAVE 11mm RADIUS AT INTERNAL CORNER					
NO PAINT IN WAY OF TF BOLT CONNECTIONS.					
ASSEMBLY MARK TO BE STAMPED ON TOP FACE INDICATED BY					
DO NOT SCALE OFF DRAWING ASK IN DOUBT.					
< INDICATES CONNECTING SIDE OF PLATE					
SURFACE FINISH AS PER CLIENT SPECIFICATION					

SHEET SIZE	PROJECT No:	DRAWING No:	REVISION
A1	4150	[2FR.106]	A

PHASE	QTY.
1	1

The drawing illustrates a structural beam assembly. The perspective view at the top shows a long, narrow beam with two sets of mounting brackets. The bottom section contains two cross-sections, A-A and B-B, which provide detailed views of the beam's internal structure and the placement of various components.


Section A-A: This section shows the beam's profile with a central channel. Key components and dimensions include:

- Dimensions:** Total width is 4815 mm. The distance from the left edge to the first bracket is 809 mm. The distance between the two brackets is 2956 mm. The distance from the second bracket to the right edge is 961 mm. The beam's height is 45 mm.
- Components:** The beam is labeled C27. It features two sets of mounting brackets, each labeled f77 (B/S) CTR'D. The beam is supported by two sets of rollers, labeled m142 and m141. The rollers are labeled f80 and f86.
- Other Labels:** The beam is also labeled f77 CTR'D and f79 CTR'D.

Section B-B: This section shows the beam's profile with a central channel. Key components and dimensions include:

- Dimensions:** Total width is 4796 mm. The distance from the left edge to the first bracket is 809 mm. The distance between the two brackets is 2956 mm. The distance from the second bracket to the right edge is 961 mm. The beam's height is 45 mm.
- Components:** The beam is labeled C27. It features two sets of mounting brackets, each labeled f77 (B/S) CTR'D. The beam is supported by two sets of rollers, labeled m142 and m141. The rollers are labeled f80 and f86.
- Other Labels:** The beam is also labeled f77 CTR'D and f79 CTR'D.

PAINT : ROZP

						GENERAL NOTES	<div><div><div>DRAFTING SERVICES</div><div>www.jddrafting.co.au</div></div></div>	<table><tr><td>NAME</td><td>DATE</td></tr><tr><td>DRAWN BY: DSK</td><td>07.10.2017</td></tr><tr><td>CHECKED BY: J. PATEL</td><td>07.10.2017</td></tr><tr><td>APPROVED BY:</td><td></td></tr><tr><td>SCALE:</td><td>AS NOTED</td></tr><tr><td>MODELLED BY: J. PATEL/0114</td><td></td></tr><tr><td>CLIENT: MACWELD INDUST</td><td></td></tr></table>	NAME	DATE	DRAWN BY: DSK	07.10.2017	CHECKED BY: J. PATEL	07.10.2017	APPROVED BY:		SCALE:	AS NOTED	MODELLED BY: J. PATEL/0114		CLIENT: MACWELD INDUST		PROJECT TITLE		TAPAROO RESERVE CLUBROOMS	
NAME	DATE																									
DRAWN BY: DSK	07.10.2017																									
CHECKED BY: J. PATEL	07.10.2017																									
APPROVED BY:																										
SCALE:	AS NOTED																									
MODELLED BY: J. PATEL/0114																										
CLIENT: MACWELD INDUST																										
				TAPAROOSA5017																						
				COLUMN																						
				SHEET SIZE	PROJECT No:	DRAWING No:	REVISION																			
2	0	ISSUED FOR FABRICATION	DSK	J. PATEL	07.10.2017																					
1	A	ISSUED FOR APPROVAL	DSK	J. PATEL	28.07.2017																					
No	REV MARK	REVISION DESCRIPTION	DRN. BY	CHK. BY	REV. DATE	ALL DIMENSIONS IN MILLIMETRES U.N.O.	0																			
ALL WELDING PREPARATION SHALL BE TO AS 1554 PART 1 & 5 UNO. ALL FILLET WELDS SHALL BE 5mm CONTINUOUS UNO. ALL BUTT WELD SHALL BE FULL PENETRATION UNO, GRADE SP UNO. REMOVE ALL BURRS AD SHARP EDGES ALL HOLES ARE Ø22 & BOLTS ARE M10 & 8 UNO. CLEATS ON C/L OF MEMBER UNO. ALL NOTCHES TO HAVE 11mm RADIUS AT INTERNAL CORNER NO PAINT IN WAY OF IT BOLT CONNECTIONS ASSEMBLY MARK TO BE STAMPED ON TOP FACE AT LOCATION INDICATED BY DO NOT SCALE OFF DRAWING ASK IN DOUBT - INDICATES CONNECTING SIDE OF PLATE SURFACE FINISH AS PER CLIENT SPECIFICATION																										

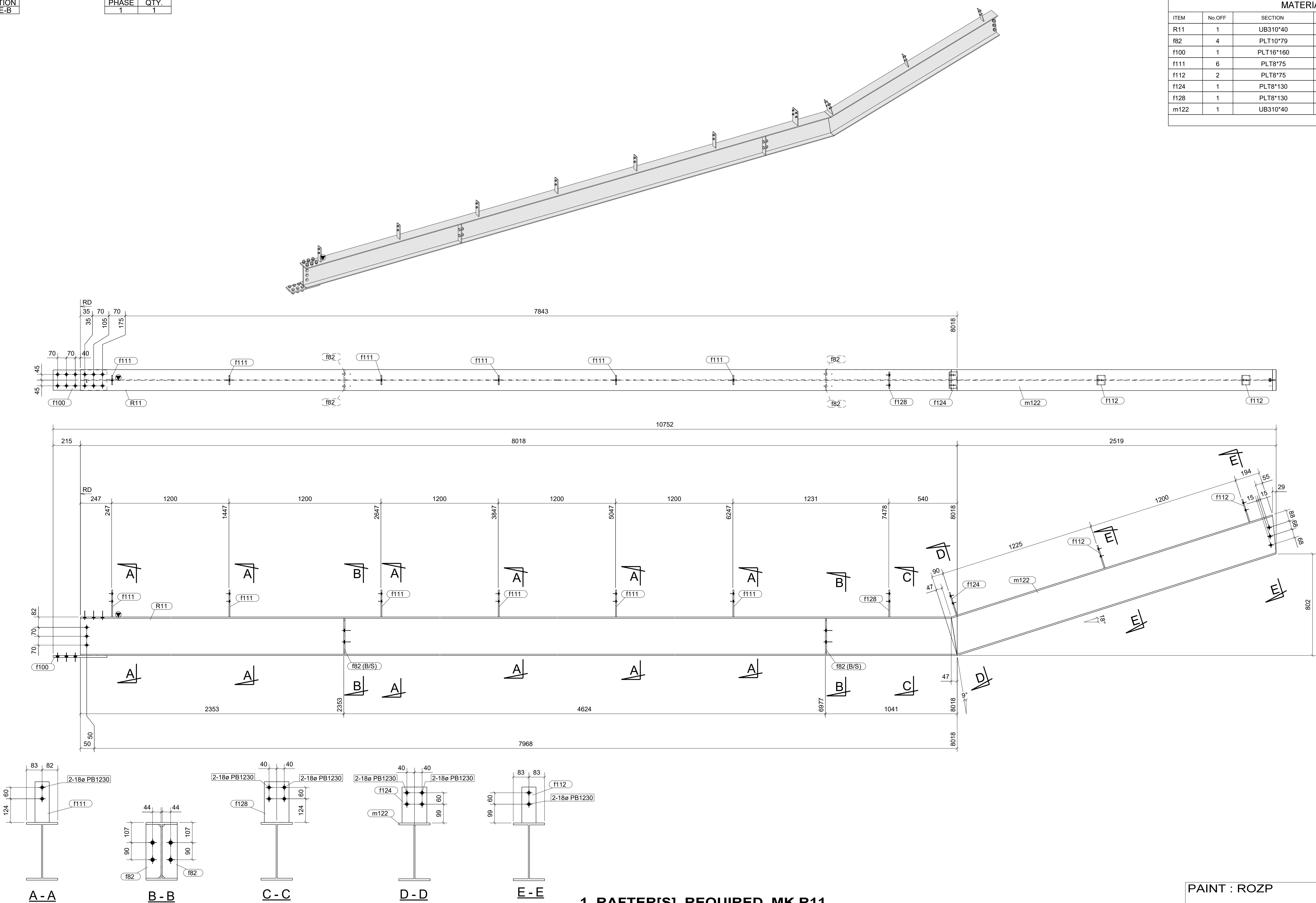
GRID LOCATION
R11 4/E-B

PHASE
1

QTY.
1



MATERIAL LIST

ITEM	No.OFF	SECTION	LENGTH	GRADE	WEIGHT(kg)	AREA(m ²)
R11	1	UB310*40	8018	300	327.9	9.9
f82	4	PLT10*79	284	250	7.0	0.2
f100	1	PLT16*160	425	250	8.5	0.2
f111	6	PLT8*75	214	250	6.1	0.2
f112	2	PLT8*75	189	250	1.8	0.1
f124	1	PLT8*130	189	250	1.5	0.1
f128	1	PLT8*130	214	250	1.7	0.1
m122	1	UB310*40	2709	300	110.8	3.4
TOTAL:					465.4	14.1



1 RAFTER[S] REQUIRED MK R11
PROFILE = UB310*40
SCALE:1:10

PAINT : ROZP

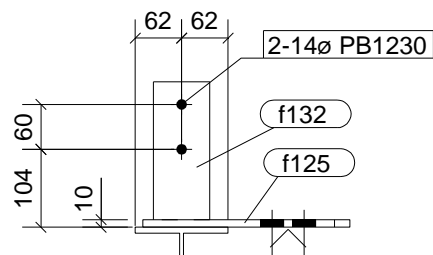
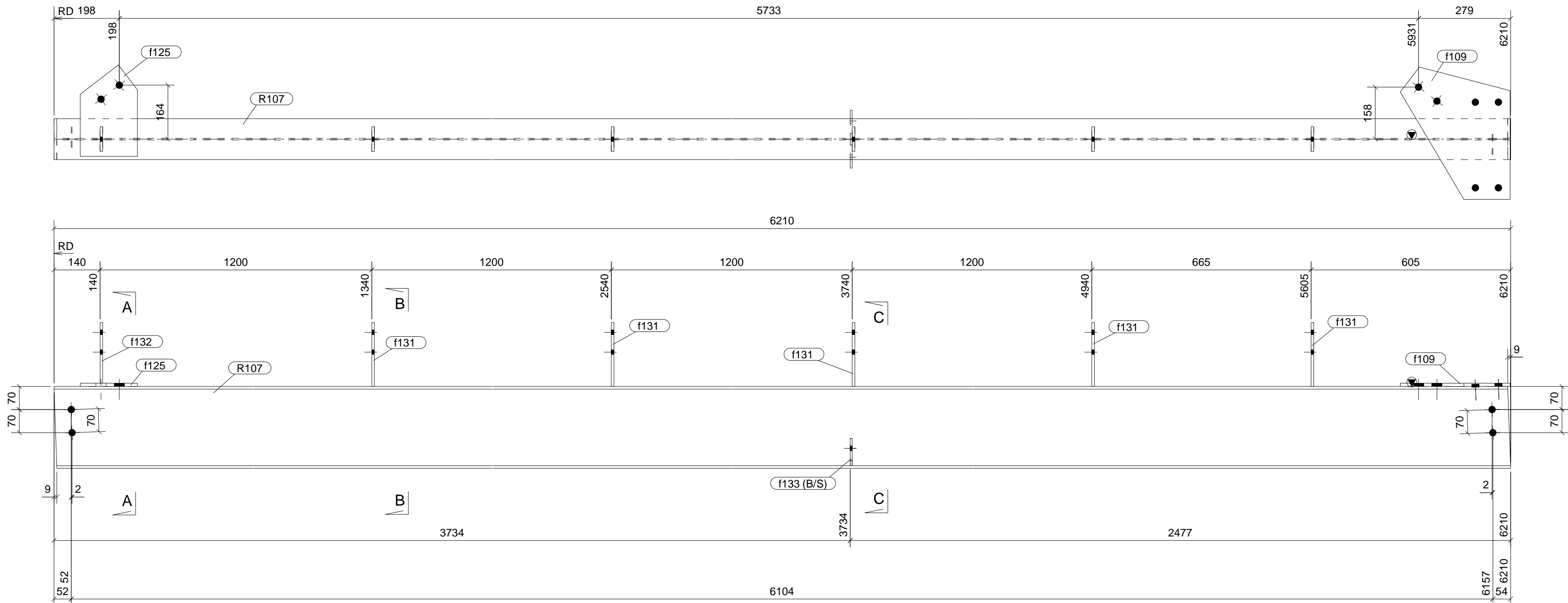
								GENERAL NOTES		<div> www.jpdrafting.co.au</div>		NAME		DATE	PROJECT TITLE				
								ALL WELDING PREPARATION SHALL BE TO AS 1554 PART 1 & 5 UNO.				DRAWN BY	DSK	07.10.2017	TAPAROO RESERVE CLUBROOMS				
								ALL FILLET WELDS SHALL BE 6mm CONTINUOUS UNO.				CHECKED BY	J. PATEL	07.10.2017	TAPAROOSA5017				
								ALL BUTT WELD SHALL BE FULL PENETRATION UNO, GRADE SP UNO.				APPROVED BY							
								REMOVE ALL BURRS AND SHARP EDGES				SCALE	AS NOTED						
								ALL HOLES ARE Ø22 & BOLTS ARE M20 & 8 IS UNO.				MODELLED BY	J. PATEL/0114			RAFTER			
								CLEATS ON C/L OF MEMBER UNO				CLIENT	MACWELD INDUST			SHEET SIZE	PROJECT No:	DRAWING No:	REVISION
								NOTCHES TO HAVE 1mm RADIUS AT INTERNAL CORNER				ALL DIMENSIONS IN MILLIMETRES U.N.O.				A1	0139	[R.11]	0
								PAINT IN WAY OF TF BOLT CONNECTIONS				NOT SCALE OFF DRAWINGS ASK IN DOUBT.							
								INDICATES CONNECTING SIDE OF PLATE											
								SURFACE FINISH AS PER CLIENT SPECIFICATION											

2	0	ISSUED FOR FABRICATION	DSK	J. PATEL	07.10.2017
1	A	ISSUED FOR APPROVAL	DSK	J. PATEL	28.07.2017
No	REV MARK	REVISION DESCRIPTION	DRN. BY	CHK. BY	REV. DATE

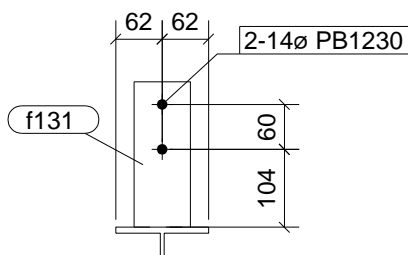
GRID LOCATION	
R107	5-6/C-A

PHASE	QTY.
3	1

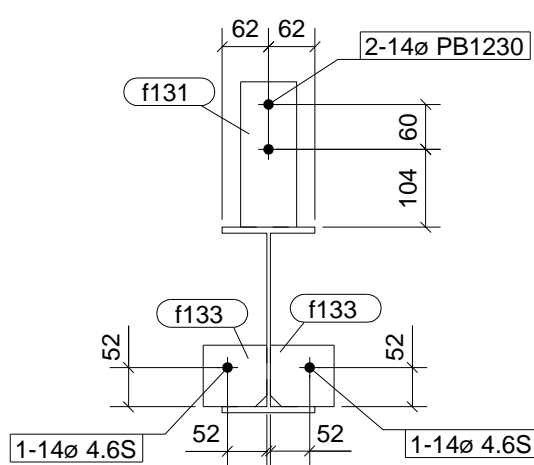
MATERIAL LIST						
ITEM	No.OFF	SECTION	LENGTH	GRADE	WEIGHT(kg)	AREA(m ²)
R107	1	UB250*26	6210	300PLUS	159.4	6.0
f109	1	PLT10*333	401	250	7.1	0.2
f125	1	PLT10*174	277	250	3.2	0.1
f131	5	FL8*75	194	250	4.6	0.2
f132	1	FL8*75	184	250	0.9	0.0
f133	2	PLT6*82	85	250	0.6	0.0
TOTAL:					175.8	6.5



A - A



B - B



C - C

1 RAFTER[S] REQUIRED MK R107
PROFILE = UB250*26
SCALE:1:10

PAINT : DULUX DURAMAX GPE

						<div>GENERAL NOTES</div> <div><div>ALL WELDING PREPARATION SHALL BE TO AS 1554 PART 1 & 5 UNO.</div><div>ALL FILLET WELDS SHALL BE 6mm CONTINUOUS UNO.</div><div>ALL BUTT WELD SHALL BE FULL PENETRATION UNO, GRADE SP UNO.</div><div>REMOVE ALL BURRS AND SHARP EDGES.</div><div>ALL HOLES ARE Ø22 & BOLTS ARE M20 8.8'S UNO.</div><div>CLEATS ON CL. OF MEMBER UNO.</div><div>ALL NOTCHES TO HAVE 11mm RADIUS AT INTERNAL CORNER.</div><div>NO PAINT IN WAY OF TF-BOLT CONNECTIONS.</div><div>ASSEMBLY MARK TO BE STAMPED ON TOP FACE AT LOCATION INDICATED BY</div><div>DO NOT SCALE OFF DRAWING ASK IN DOUBT.</div><div>< INDICATES CONNECTING SIDE OF PLATE</div><div>SURFACE FINISH AS PER CLIENT SPECIFICATION</div></div>		<div><div><div><div></div><div></div><div></div></div><div>DRAFTING SERVICES</div></div></div>	<div><div><div><div>NAME</div><div>J. PATEL</div></div><div><div>DATE</div><div>05.06.2017</div></div></div><div><div><div>CHECKED BY</div><div>F. RAHMAN</div></div><div><div>05.06.2017</div></div></div><div><div><div>APPROVED BY</div><div></div></div><div></div></div><div><div><div>SCALE</div><div>AS NOTED</div></div><div><div>MODELL</div><div>J PATEL / 0114</div></div><div><div>CLIENT</div><div>PIKE CONSTRUCTI</div></div></div><div><div>ALL DIMENSIONS IN MILLIMETRES U.N.O.</div><div><div><div></div><div></div></div></div></div></div>	<div><div>PROJECT TITLE</div><div>ALDI HAYBOROUGH LOT 1010 SA</div></div> <div><div>RAFTER</div><div><div><div>SHEET SIZE</div><div>A2</div></div><div><div>PROJECT No:</div><div>S-0928</div></div><div><div>DRAWING No:</div><div>[R.107]</div></div></div><div><div>REVISION</div><div>0</div></div></div>
3	0	ISSUED FOR FABRICATION	J. PATEL	F. RAHMAN	05.06.2017					
2	B	ISSUED FOR APPROVAL	J. PATEL	F. RAHMAN	25.05.2017					
1	A	ISSUED FOR APPROVAL	J. PATEL	F. RAHMAN	14.05.2017					
No	REV MARK	REVISION DESCRIPTION	DRN. BY	CHK. BY	REV. DATE					