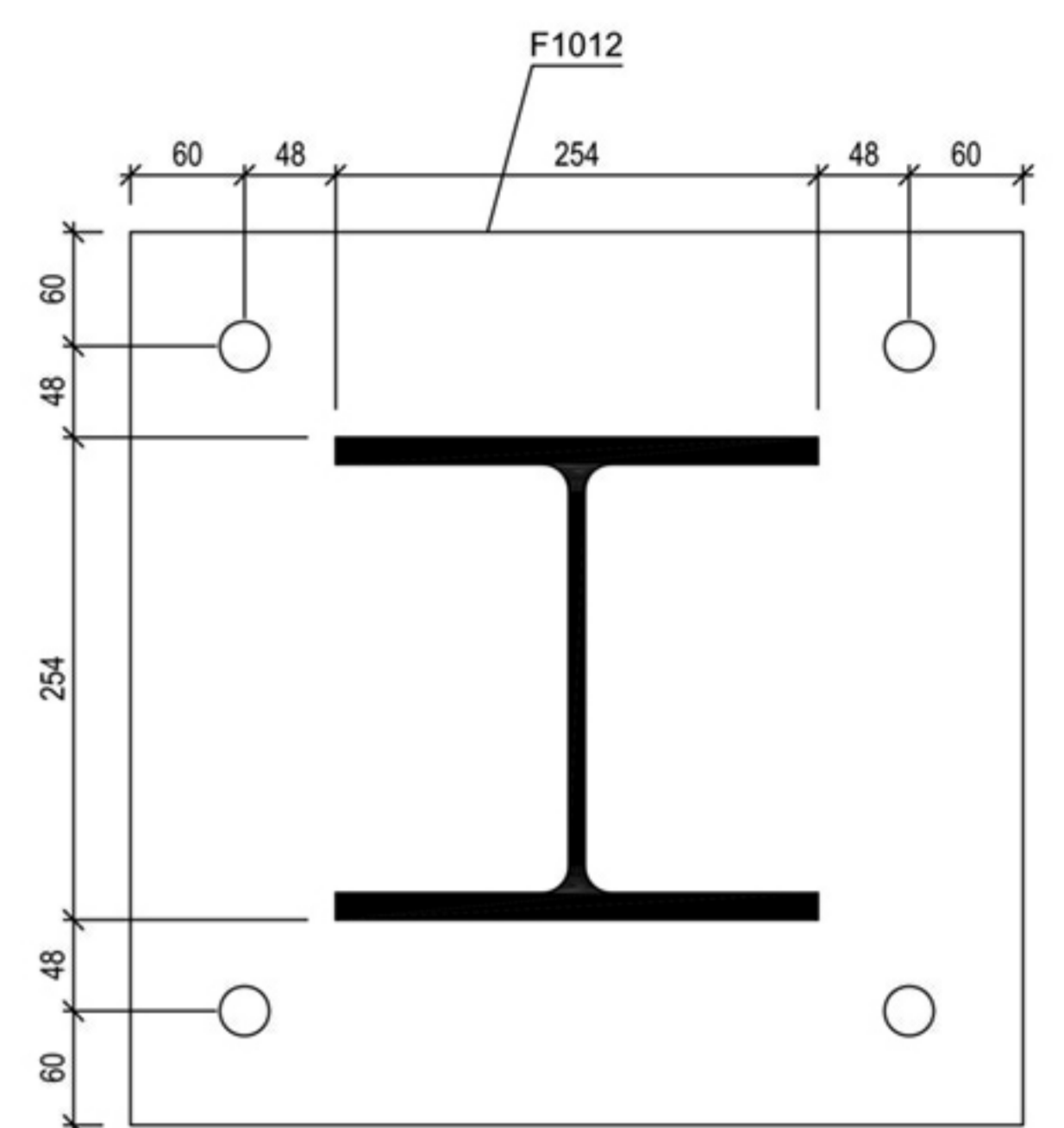
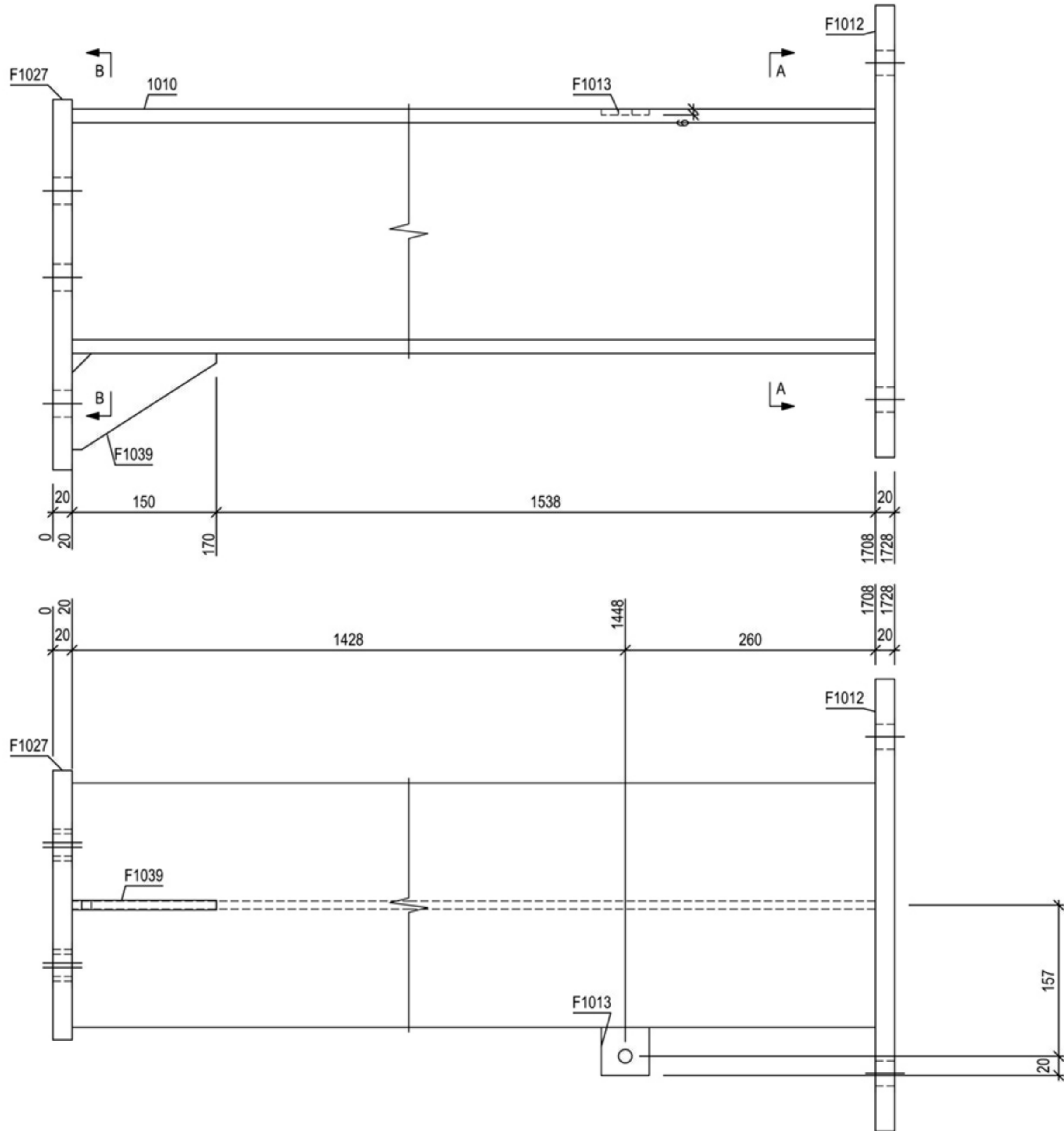
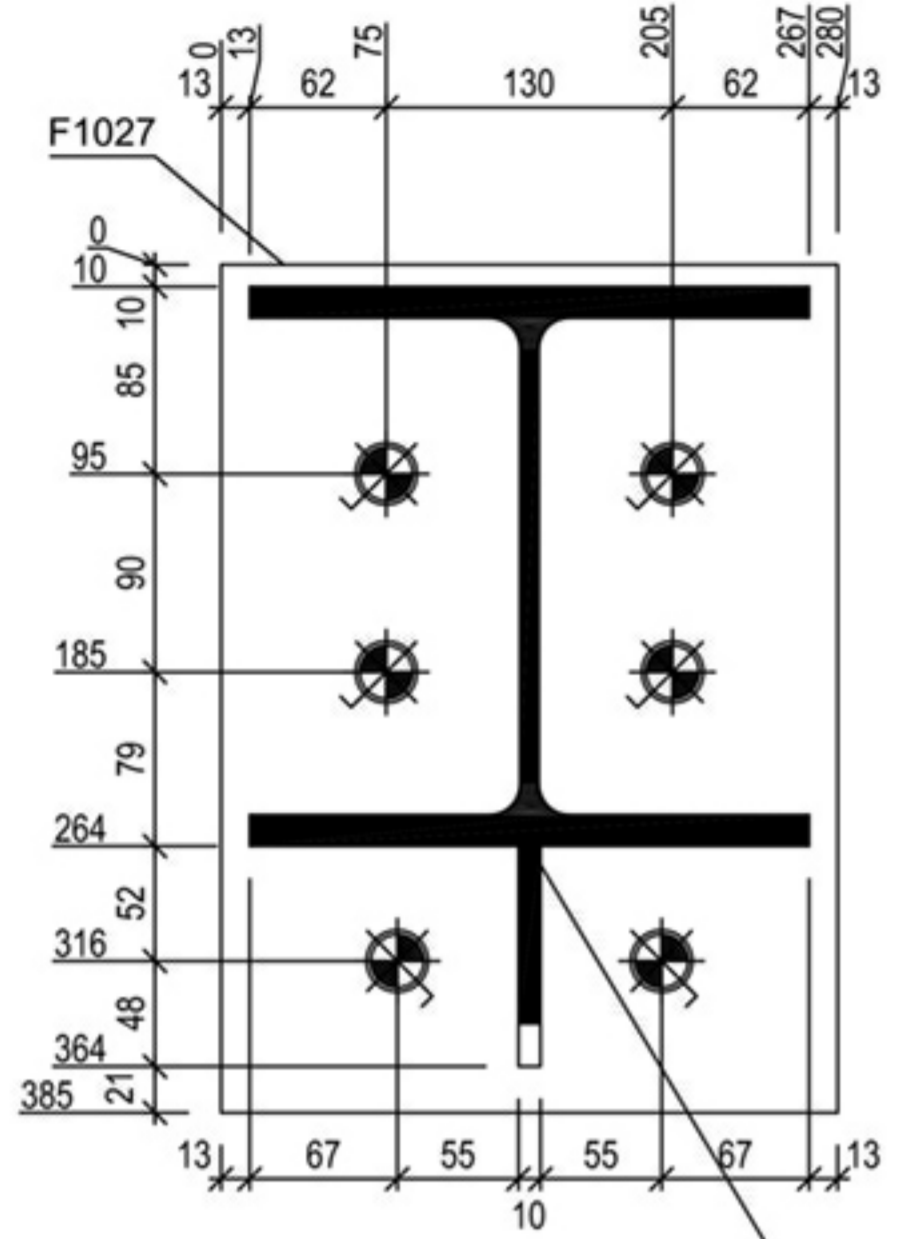


MARK	QTY	LOT
C3	1	

MARK	QTY	DESCRIPTION	LENGTH	GRADE	FINISH	PART KG	TOTAL KG
C3	1	250 UC 72.9					
1010	1	250 UC 72.9	1688	300+	Galvanised	123.06	123.06
F1012	1	PLT20x470	470	300	SPEC	34.68	34.68
F1013	1	FL50x6	50	300	SPEC	0.12	0.12
F1027	1	PLT20x280	385	300	SPEC	16.92	16.92
F1039	1	FL100x10	150	300	SPEC	0.67	0.67
SINGLE PART QTY'S LISTED TO COMPLETE x1 ASSY ONLY - REFER PART DRGS						TOTAL	175.45
						COMBINED TOTAL	175.45



C3 1-OFF SCALE 1:5
 250 UC 72.9 GRADE: 300+ FINISH: Galvanised
 GRID REF: (B/2)

- GENERAL NOTES :**
- 1) MATERIAL AS PER BOM.
 - 2) ALL FILLET WELDS SHALL BE 6mm CONTINUOUS UNO.
 - 3) ALL BUTT WELD SHALL BE FULL PENETRATION UNO.
 - 4) ALL STEEL WORK NEED TO BE HOT DIP GALV UNO.
 - 5) ALL ITEMS NEED TO BE MARKED WITH DRAWING No.
 - 6) APPLY DRAINAGE HOLES TO GALV ITEMS WHERE REQUIRED.



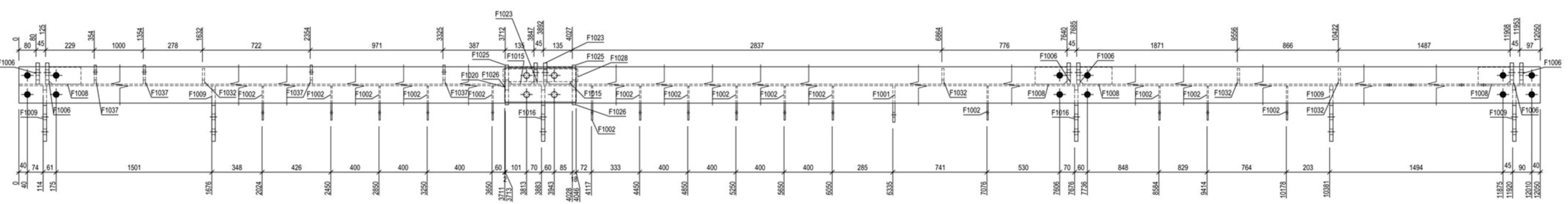
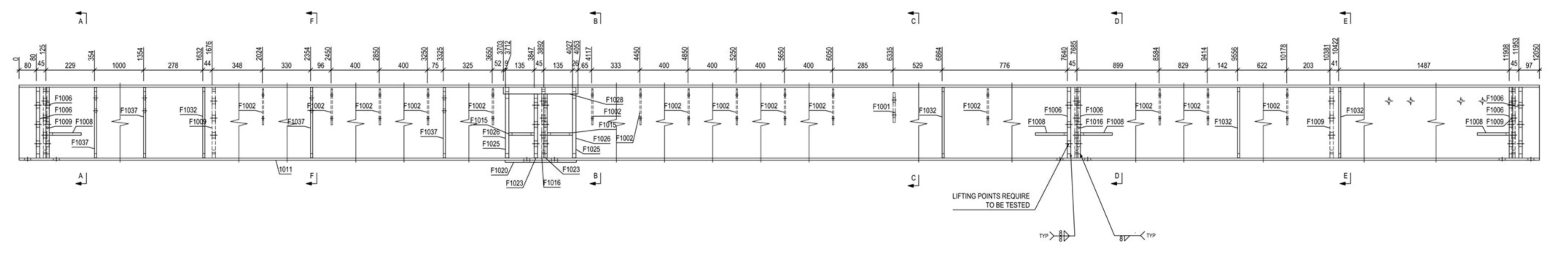
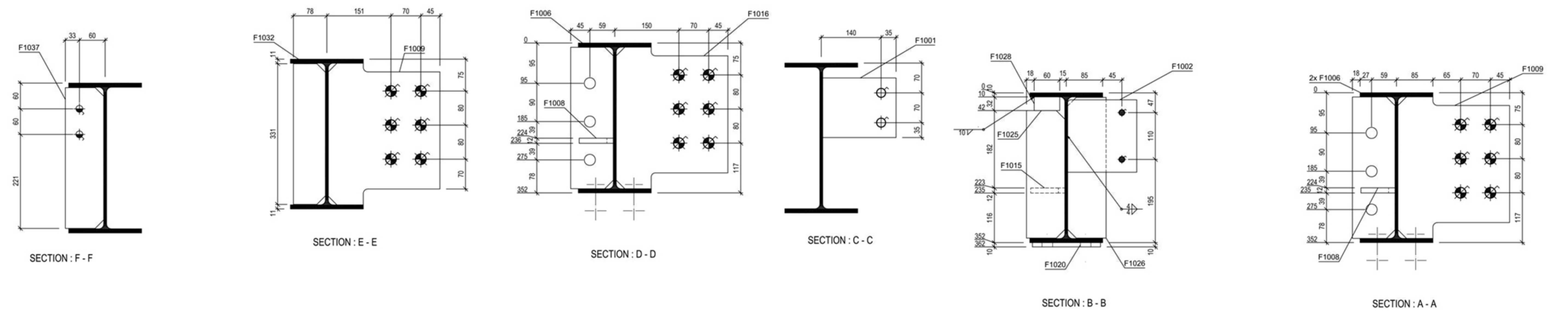
	NAME	DATE	TITLE
DRAWN BY	P.PATEL	29/06/2015	
CHECKED BY	J.PATEL	29/06/2015	
APPROVED BY	C.C.Ng	29/06/2015	
SCALE	1:5		
PROJECT No.	150602-50		

WELDMENT ARRANGEMENT AND DETAILS				REVISION
DO NOT SCALE - ASK IN DOUBT	SHEET SIZE	CLIENT PROJECT No:	DRAWING No:	
ALL DIMENSIONS IN MILLIMETRES U.N.O.	A2		50-C3	0

REV	DATE	CHK'D	DESCRIPTION
0	29/06/2015	KP	ISSUE FOR CONSTRUCTION

MARK	QTY	LOT	1																	
PB3	1																			

MARK	QTY	DESCRIPTION	(LENGTH)	GRADE	FINISH	PART KG	TOTAL KG
PB3	1	360 UB 44.7					
F1011	1	360 UB 44.7	12050	300+	Galvanised	538.63	538.63
F1001	1	PL 110x145	172	300	SPEC	1.89	1.89
F1002	15	PL 16x162.05	170	300	SPEC	1.30	19.46
F1006	6	PL 100x16	332	300	SPEC	4.12	24.74
F1008	4	PL 150x12	80	300	Galvanised	1.12	4.48
F1009	4	PL 116x262.05	333	300	SPEC	10.25	40.98
F1015	2	PL 112x80	119	300	Galvanised	0.88	1.75
F1016	2	PL 116x262.05	333	300	SPEC	10.25	20.49
F1020	1	PL 110x160	335	300	SPEC	4.21	4.21
F1023	2	PL 100x16	269	300	SPEC	3.71	7.42
F1025	2	PL 116x90	299	300	SPEC	3.34	6.67
F1026	2	PL 116x90	331	300	SPEC	3.69	7.37
F1028	1	PL 132x60	350	300	SPEC	5.28	5.28
F1032	4	PL 60x10	331	300	SPEC	1.52	6.06
F1037	4	FL 90x10	331	300	SPEC	2.30	9.22
		TOTAL				700.25	700.25
		COMBINED TOTAL				700.25	700.25



PB3 1-OFF SCALE 1:10
 360 UB 44.7 GRADE: 300+ FINISH: Galvanised
 GRID REF: (1B)/(4B)

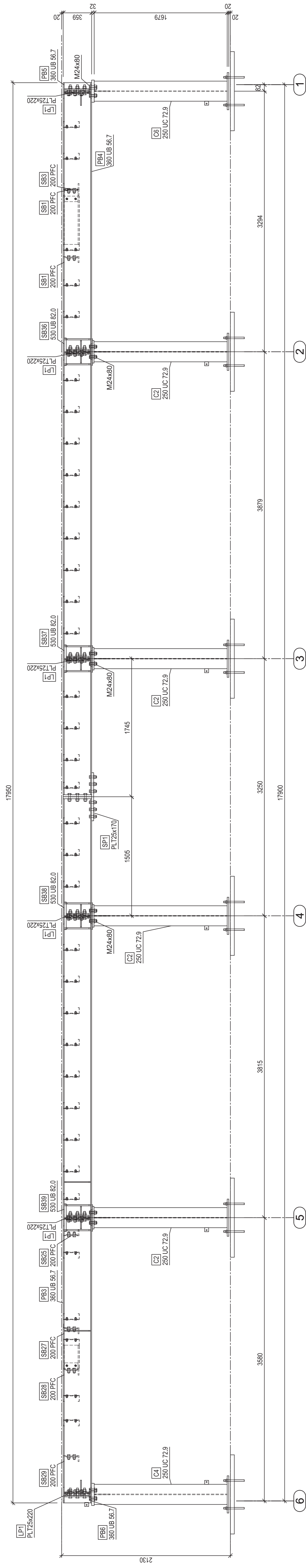
- GENERAL NOTES :**
- 1) MATERIAL AS PER BOM.
 - 2) ALL FILLET WELDS SHALL BE 6mm CONTINUOUS UNO.
 - 3) ALL BUTT WELDS SHALL BE FULL PENETRATION UNO.
 - 4) ALL STEEL WORK NEED TO BE HOT DIP GALV UNO.
 - 5) ALL ITEMS NEED TO BE MARKED WITH DRAWING No.
 - 6) APPLY DRAINAGE HOLES TO GALV ITEMS WHERE REQUIRED.



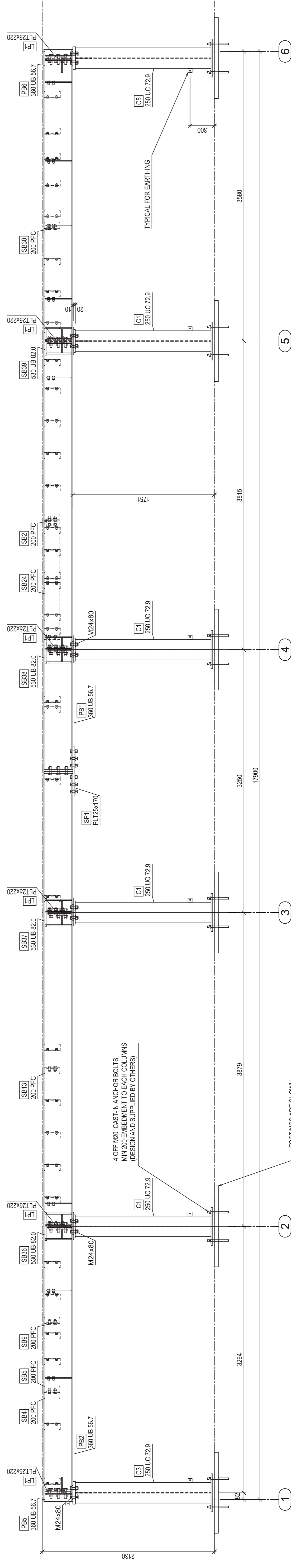
NAME	DATE	TITLE
DRAWN BY P.PATEL	29/06/2015	
CHECKED BY J.PATEL	29/06/2015	
APPROVED BY C.C.Ng	29/06/2015	
SCALE 1:10, 1:5		
PROJECT No. 150602-50		
DO NOT SCALE - ASK IN DOUBT		

SHEET SIZE	CLIENT PROJECT No.	DRAWING No.	REVISION
A1		50-PB3	0

REV	DATE	CHK'D	DESCRIPTION
0	29/06/2015	KP	ISSUE FOR CONSTRUCTION

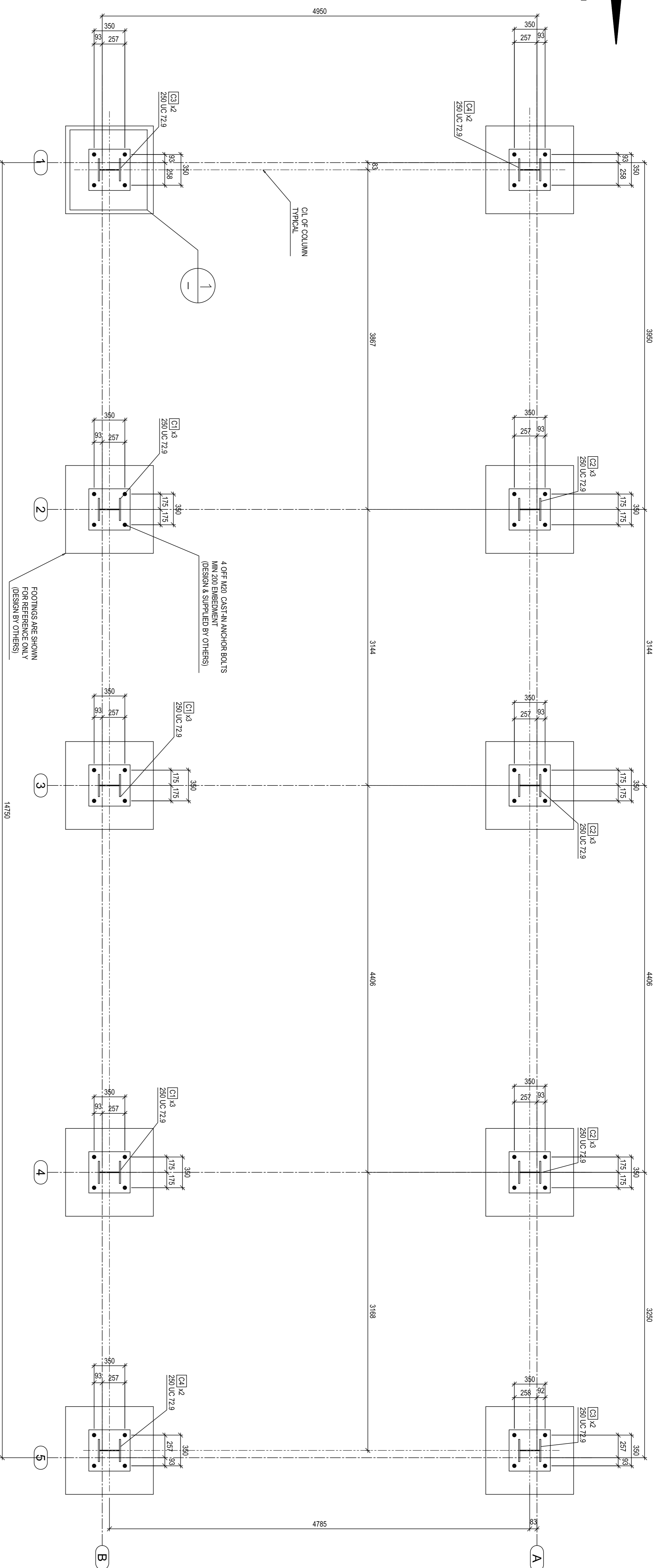
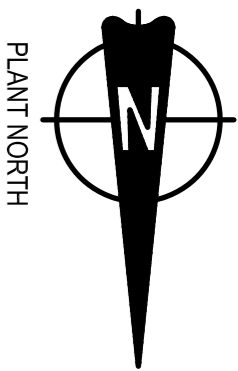


ELEVATION AT GRID - A
SCALE 1:25



Note: Earthing tags are provided on each leg for consistency of fabrication only. Two legs per building are required to be earthed to the earth grid as per the Earthing Design Criteria TCH-E-102

ELEVATION AT GRID - B
SCALE 1:25

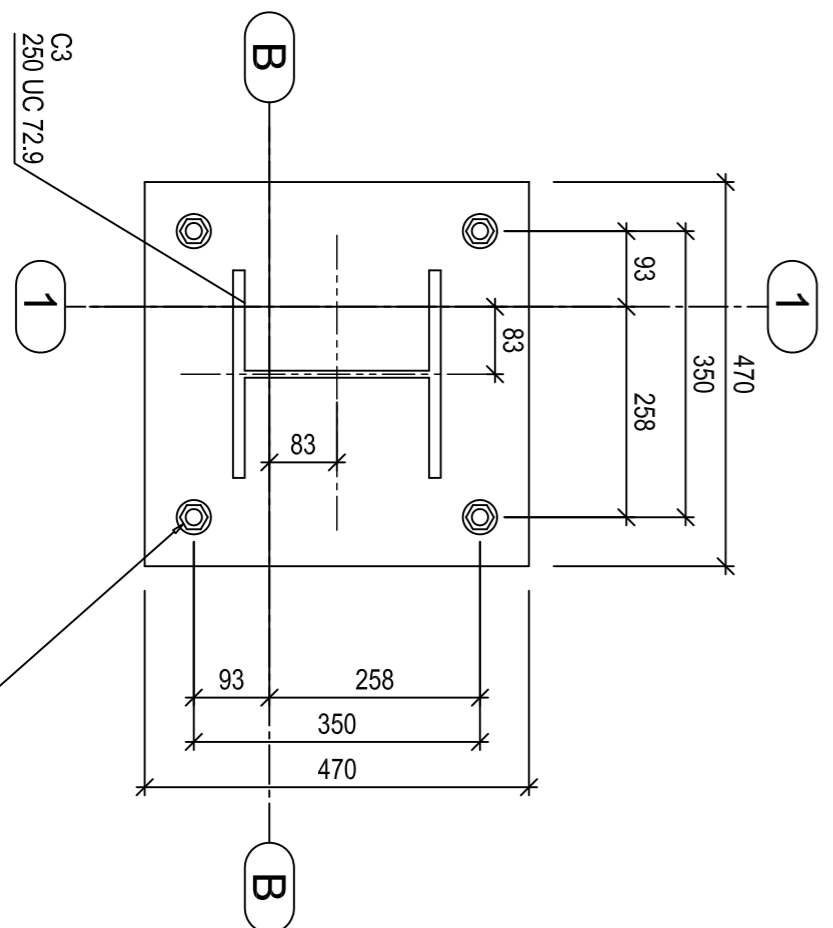


4 OFF M20 CAST-IN ANCHOR BOLTS
MIN 200 EMBEDMENT
(DESIGN & SUPPLIED BY OTHERS)

FOOTINGS ARE SHOWN
FOR REFERENCE ONLY
(DESIGN BY OTHERS)

COLUMN LAYOUT

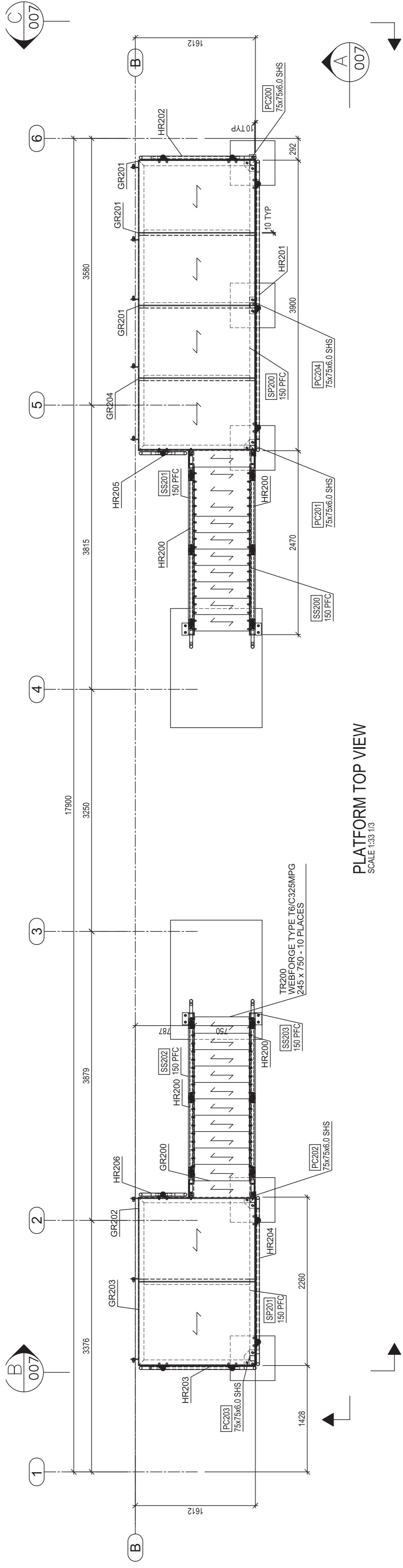
SCALE: 1:25



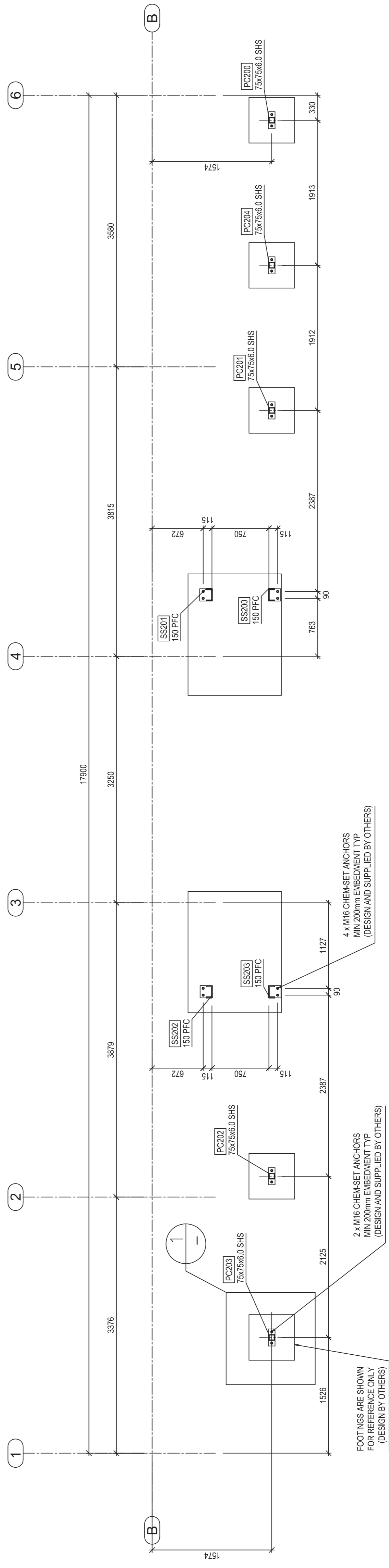
BASE PLATE DETAILS

4 OFF M20 CAST-IN ANCHOR BOLTS
MIN 200 EMBEDMENT
(DESIGN & SUPPLIED BY OTHERS)

DETAIL
SCALE: 1:10



PLATFORM TOP VIEW
SCALE 1:33.10



PLATFORM COLUMN LAYOUT
SCALE 1:33.10

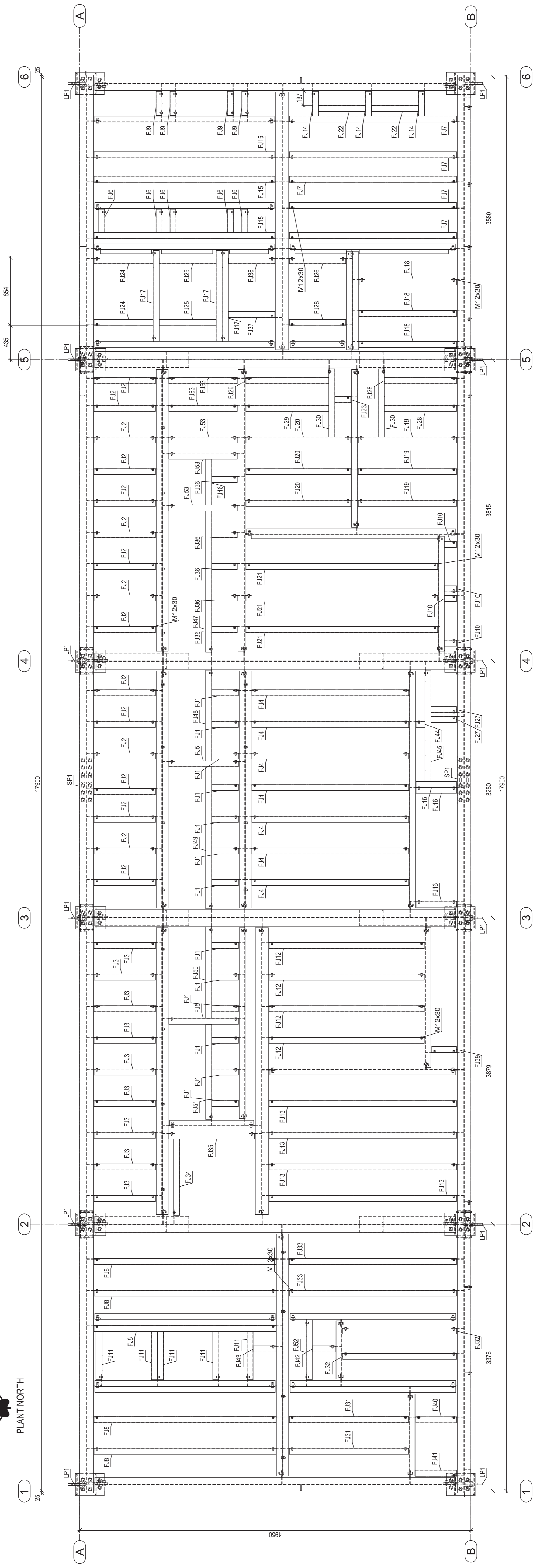
FOOTINGS ARE SHOWN FOR REFERENCE ONLY (DESIGN BY OTHERS)

2 x M16 CHEM-SET ANCHORS MIN. 200mm EMBEDMENT TYP (DESIGN AND SUPPLIED BY OTHERS)

4 x M16 CHEM-SET ANCHORS MIN. 200mm EMBEDMENT TYP (DESIGN AND SUPPLIED BY OTHERS)



PLANT NORTH



FLOOR JOISTS LAYOUT
SCALE 1:25

